

THE MERIDIAN GREENS - UNIT NO. 3,

A SUBDIVISION

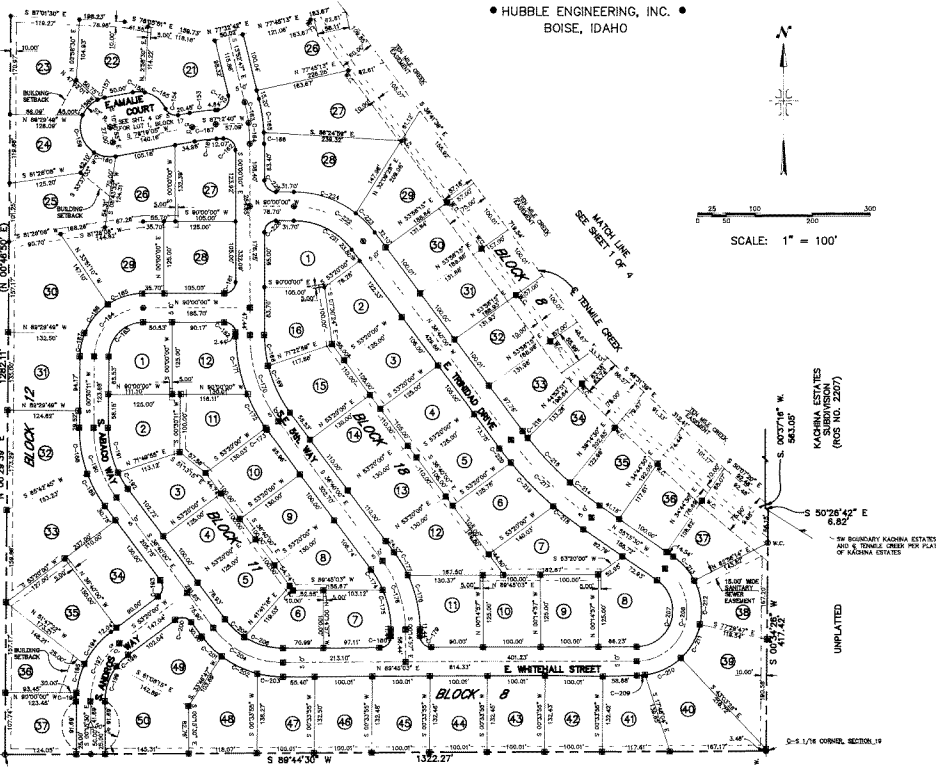
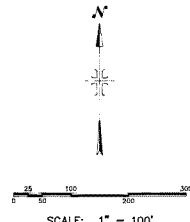
PORTIONS OF THE E1/2 W1/2 AND THE SW1/4 NE1/4, SECTION 19,
T.3N., R.1E., B.M.,

MERIDIAN, ADA COUNTY, IDAHO
1994

• HUBBLE ENGINEERING, INC. •
BOISE, IDAHO

- LEGEND
- SET 5/8" X 3/4" IRON PIN WITH PLASTIC CAP
 - SET 1/2" X 3/4" IRON PIN WITH PLASTIC CAP
 - FOUND 5/8" IRON PIN
 - △ CALCULATED POINT
 - PROPERTY BOUNDARY
 - RIGHT-OF-WAY LINE
 - CENTERLINE
- PUBLIC UTILITIES, DRAINAGE AND IRRIGATION EASEMENT TO FROM
- DATA OF RECORD
- MC WITHIN CORNER TO PROPERTY/LOT CORNER
 - 16 LOT NUMBER
 - 1/2" IRON PIN SET 2-1-94
 - 5/8" IRON PIN SET 2-1-94

MATCH LINE
SEE SHEET 2 OF 4



CURVE DATA:

CURVE	RADIUS	LENGTH	CHORD	BEARING	DELTA
C-129	305.00	48.77	44.74	S 36°39'53" V	101°05'07"
C-130	305.00	47.44	43.61	N 62°05'14" V	82°18'12"
C-131	29.00	26.36	24.49	N 62°05'14" V	75°21'21"
C-132	305.00	47.44	43.61	N 21°11'42" E	82°18'12"
C-136	50.00	31.10	29.36	S 89°05'23" E	23°15'04"
C-144	305.00	32.49	31.23	S 13°09'56" E	133°09'56"
C-158	30.00	38.11	37.27	S 44°39'03" E	43°59'39"
C-159	30.00	38.11	37.27	S 44°39'03" E	43°59'39"
C-160	30.00	38.11	37.27	S 44°39'03" E	43°59'39"
C-161	275.00	37.89	37.05	S 89°15'53" E	97°03'20"
C-162	275.00	37.89	37.05	N 48°23'40" E	90°47'02"
C-163	305.00	36.18	36.15	S 10°25'38" E	96°58'20"
C-164	305.00	36.50	36.43	S 10°25'38" E	96°58'20"
C-165	335.00	39.25	38.36	S 98°48'33" E	157°24'24"
C-166	335.00	39.25	38.36	S 98°48'33" E	157°24'24"
C-167	300.00	41.33	41.33	S 89°15'53" E	97°03'20"
C-168	300.00	39.50	39.46	S 89°15'53" E	97°03'20"
C-169	255.00	39.40	39.83	S 05°09'21" E	23°51'17"
C-170	255.00	39.99	37.23	S 05°09'21" E	23°51'17"
C-171	875.00	105.10	104.46	S 10°58'50" E	131°59'51"
C-172	275.00	66.85	65.60	S 09°50'42" E	137°50'49"
C-173	275.00	4.03	4.03	S 09°50'42" E	00°00'00"
C-174	175.00	49.78	45.69	S 09°50'42" E	131°11'11"
C-175	175.00	78.45	69.44	S 11°46'29" E	137°11'11"
C-176	200.00	107.12	104.99	S 18°07'28" E	161°25'02"
C-177	205.00	46.50	46.44	S 11°46'29" E	111°58'48"
C-178	225.00	90.49	90.73	S 12°38'04" E	244°34'24"
C-179	225.00	91.48	90.28	S 12°38'04" E	167°03'00"
C-180	25.00	31.42	28.28	S 44°45'03" V	90°00'00"
C-181	25.00	31.42	28.28	S 44°45'03" V	90°00'00"
C-182	25.00	31.42	28.28	S 44°45'03" V	90°00'00"
C-183	65.00	32.12	30.48	S 89°05'23" E	90°00'00"
C-184	65.00	32.77	31.94	S 45°15'05" E	89°25'49"
C-185	110.00	64.99	64.00	S 73°04'02" V	203°01'00"
C-186	110.00	64.99	64.00	S 73°04'02" V	203°01'00"
C-187	110.00	61.84	61.38	S 11°03'54" E	214°27'27"
C-188	105.00	61.84	61.38	S 11°03'54" E	207°18'11"
C-189	225.00	69.04	69.08	S 28°25'49" E	167°28'00"
C-190	225.00	69.04	69.08	S 28°25'49" E	227°01'00"
C-191	175.00	79.69	79.01	S 11°38'25" E	268°28'31"
C-192	175.00	79.69	79.01	S 11°38'25" E	113°54'29"
C-193	50.00	31.42	28.28	S 08°20'00" E	90°00'00"
C-194	50.00	31.42	28.28	S 08°20'00" E	90°00'00"
C-195	150.00	55.21	51.94	S 15°38'39" V	151°56'29"
C-196	150.00	55.21	51.94	S 15°38'39" V	151°56'29"
C-197	150.00	55.21	51.94	S 15°38'39" V	151°56'29"
C-198	150.00	55.21	51.94	S 15°38'39" V	151°56'29"
C-199	150.00	55.21	51.94	S 15°38'39" V	151°56'29"
C-200	150.00	55.21	51.94	S 15°38'39" V	151°56'29"
C-201	150.00	55.21	51.94	S 15°38'39" V	151°56'29"
C-202	175.00	69.04	69.08	S 81°40'00" V	90°00'00"
C-203	175.00	69.04	69.08	S 81°40'00" V	90°00'00"
C-204	150.00	69.04	69.08	S 64°07'31" E	128°45'59"
C-205	150.00	69.04	69.08	S 64°07'31" E	128°45'59"
C-206	150.00	146.28	135.29	S 43°25'28" E	239°24'58"
C-207	150.00	146.28	135.29	S 43°25'28" E	239°24'58"
C-208	150.00	70.77	69.82	S 74°01'50" E	206°26'11"
C-209	150.00	70.77	69.82	S 74°01'50" E	206°26'11"
C-210	88.00	222.72	147.86	N 17°14'44" E	145°00'33"
C-211	133.00	14.71	14.70	N 86°01'54" E	07°27'24"
C-212	133.00	69.79	64.69	N 86°01'54" E	207°26'24"
C-213	133.00	67.98	66.90	N 29°43'28" E	248°16'19"
C-214	133.00	78.47	74.98	N 29°43'28" E	237°33'58"
C-215	113.00	35.61	35.05	N 41°09'38" E	201°11'44"
C-216	113.00	35.61	35.05	N 41°09'38" E	201°11'44"
C-217	575.00	106.73	106.38	N 43°26'30" E	103°28'00"
C-218	575.00	106.73	106.38	N 43°26'30" E	103°28'00"
C-219	605.00	106.09	103.84	N 43°57'45" E	185°35'11"
C-220	605.00	106.09	103.84	N 43°57'45" E	185°35'11"
C-221	125.00	31.26	31.26	N 43°20'00" E	207°00'00"
C-222	125.00	31.26	31.26	N 43°20'00" E	207°00'00"
C-223	125.00	31.26	31.26	N 43°20'00" E	207°00'00"
C-224	125.00	31.26	31.26	N 43°20'00" E	207°00'00"
C-225	175.00	116.15	114.03	N 40°18'51" E	151°18'51"
C-226	175.00	116.15	114.03	N 40°18'51" E	151°18'51"
C-227	175.00	31.42	28.28	S 45°00'00" E	90°00'00"

TEMPORARY EMERGENCY VEHICLE TURN-AROUND ACCESS-USER'S EASTBOUND TO REVERT BACK TO ADJACENT LOT CORNER UPON THE EXTENSION OF PUBLIC STREET.

UNPLATTED

UNPLATTED

DEVELOPER:
GLENCOE, INC.
MERIDIAN, IDAHO