

THE MERIDIAN GREENS - UNIT NO. 3,

A SUBDIVISION
 PORTIONS OF THE E1/2 W1/2 AND THE SW1/4 NE1/4, SECTION 19,
 T.3N., R.1E., B.M.,
 MERIDIAN, ADA COUNTY, IDAHO
 1994

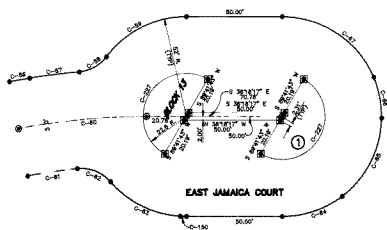
• HUBBLE ENGINEERING, INC. •
 BOISE, IDAHO

LEGEND

- △ CALCULATED POINT
- ⊙ SET 5/16" X 30" IRON PIN WITH PLASTIC CAP
- SET 1/2" X 24" IRON PIN WITH PLASTIC CAP
- RIGHT-OF-WAY LINE
- - - - CENTERLINE
- ① LOT NUMBER
- 1/2" IRON PIN SET 20 - 194

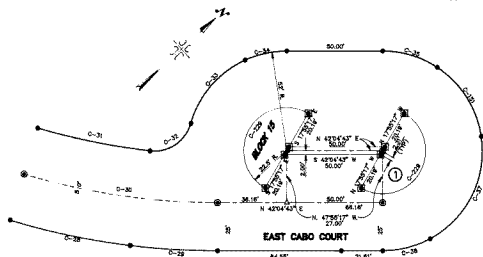


SCALE: 1" = 30'



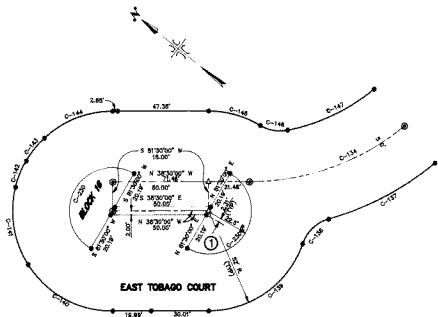
CURVE DATA:	CURVE	RADIUS	LENGTH	CHORD	BEARING	DELTA
	C-827	82.50'	75.69'	45.00'	S 83°41'49" W	180°00'00"

LOT 1, BLOCK 13
 SHEET 1 OF 4



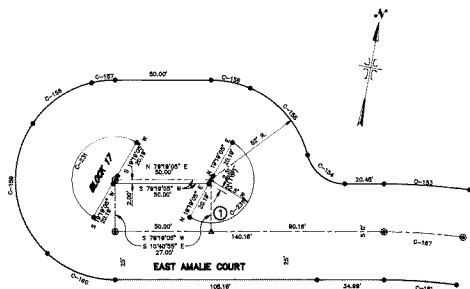
CURVE DATA:	CURVE	RADIUS	LENGTH	CHORD	BEARING	DELTA
	C-289	82.50'	75.69'	45.00'	N 17°09'17" E	180°00'00"

LOT 1, BLOCK 15
 SHEET 1 OF 4



CURVE DATA:	CURVE	RADIUS	LENGTH	CHORD	BEARING	DELTA
	C-230	82.50'	75.69'	45.00'	N 81°20'00" E	180°00'00"

LOT 1, BLOCK 16
 SHEET 2 OF 4



CURVE DATA:	CURVE	RADIUS	LENGTH	CHORD	BEARING	DELTA
	C-231	82.50'	75.69'	45.00'	N 19°19'09" E	180°00'00"

LOT 1, BLOCK 17
 SHEET 3 OF 4

DEVELOPER:
 GLENCO DEVELOPMENT INC.
 MERIDIAN, IDAHO